

# THE BAND JUST PLAYED ON

MT NELSON

G C<sup>b</sup> D<sup>b</sup> C<sup>b</sup> G C<sup>b</sup> D<sup>b</sup> C<sup>b</sup> G C<sup>b</sup> D<sup>b</sup> G



(DRUMS)


## A VERSE 1

5 C<sup>b</sup> D<sup>b</sup> G C<sup>b</sup> D<sup>b</sup> C<sup>b</sup> G Am D<sup>b</sup>



THINGS AREN'T SO CLEAR\_ WHEN YOU'RE IN THE

9 Am D<sup>b</sup> Am D




DARK\_ THOSE WE HOLD DEAR\_ THEY CAN SURE BREAK YOUR

13 G C<sup>b</sup> D<sup>b</sup> C<sup>b</sup> G C<sup>b</sup> D<sup>b</sup> C<sup>b</sup> G C<sup>b</sup> D<sup>b</sup> G C<sup>b</sup> D<sup>b</sup> G C<sup>b</sup> D<sup>b</sup> C<sup>b</sup>



HEART\_


17 G Am D<sup>b</sup> Am



STORMS IN A RAIN- BOW\_ CLOUDS THEN THE SUN\_

## B REFRAIN

21 D<sup>b</sup> Am D G



TEARS AND THEN LAUGHTER\_ AND THE BAND JUST PLAYED ON\_ AND THE BAND JUST KEPT

25 D



PLAY - ING\_ AND WE SANG A - LONG\_ AND THE BAND JUST KEPT


29 G C<sup>b</sup> D<sup>b</sup> C<sup>b</sup> G C<sup>b</sup> D<sup>b</sup> C<sup>b</sup>



PLAY - ING\_ THAT SAME\_ OLD SONG\_ SHA LA LA LA LA LA\_ THAT\_ SAME\_ OLD

## C VERSE 2

33 G C<sup>b</sup> D<sup>b</sup> G C<sup>b</sup> D<sup>b</sup> G C<sup>b</sup> D<sup>b</sup> C<sup>b</sup> G Am



SONG SHA LA LA LA SHA LA LA LA LA LA LA LA LA LA LA LADIES IN WAI- TING\_

37 D<sup>b</sup> Am D<sup>b</sup> Am

KNIGHTS ON THE RUN \_\_\_\_\_ THE BAT-TLE IS RA- GING \_\_\_\_\_

41 D G C<sup>b</sup> D<sup>b</sup> C<sup>b</sup> G C<sup>b</sup> D<sup>b</sup> C<sup>b</sup> G C<sup>b</sup> D<sup>b</sup> G

WHILE THE CHIL-DREN PLAY ON \_\_\_\_\_ WHILE THE CHIL-DREN PLAY ON \_\_\_\_\_

45 C<sup>b</sup> D<sup>b</sup> G C<sup>b</sup> D<sup>b</sup> C<sup>b</sup> G Am D<sup>b</sup>

SINGING IN THE RAIN \_\_\_\_\_ WAI-TING FOR THE

49 Am D<sup>b</sup> Am D

SUN \_\_\_\_\_ HIDING FROM THE WIND \_\_\_\_\_ AND THE BAND JUST PLAYED

53 G D

ON \_\_\_\_\_ AND THE BAND JUST KEPT PLAY - ING \_\_\_\_\_ AND WE SANG A - LONG \_\_\_\_\_

57 G C<sup>b</sup> D<sup>b</sup> C<sup>b</sup>

AND THE BAND JUST KEPT PLAY - ING \_\_\_\_\_ THAT SAME OLD SONG SHA LA LA LA LA

61 G C<sup>b</sup> D<sup>b</sup> C<sup>b</sup> G C<sup>b</sup> D<sup>b</sup> G C<sup>b</sup> D<sup>b</sup> G C<sup>b</sup> D<sup>b</sup> C<sup>b</sup> G

LA \_\_\_\_\_ THAT SAME OLD SONG SHA LA LA LA SHA LA LA LA LA LA LA LA DEE DA

65 G Am D<sup>b</sup> Am

69 D G

73 D

77 G C<sup>b</sup> D<sup>b</sup> C<sup>b</sup> G C<sup>b</sup> D<sup>b</sup> C<sup>b</sup>

SHA LA LA LA LA LA SHA LA LA LA LA

81 G C<sup>b</sup> D<sup>b</sup> G C<sup>b</sup> D<sup>b</sup> G C<sup>b</sup> D<sup>b</sup> C G

**F** VERSE 2  
Am

LA SHA LA LA LA SHA LA LA LA LA LA LA DEE DA WHEN THE TRAIN LEAVES THE STA-TION

85 D<sup>b</sup> Am D<sup>b</sup> Am

THEN YOU'LL FIND IF YOU DON'T GET ON

89 D G C<sup>b</sup> D<sup>b</sup> C<sup>b</sup> G C<sup>b</sup> D<sup>b</sup> C<sup>b</sup> G C<sup>b</sup> D<sup>b</sup> G

YOU WILL BE LEFT BE - HIND (I'M GONNA SAY IT AGAIN) YOU'LL BE LEFT BE - HIND

93 C<sup>b</sup> D<sup>b</sup> G C<sup>b</sup> D<sup>b</sup> C G Am D<sup>b</sup>

RUN-NIN' ON EMP - TY STILL ON THE

REFRAIN

97 Am D

RUN LAST SIL - VER DOL - LAR AND THE BAND JUST PLAYED

101 G D

ON AND THE BAND JUST KEPT PLAY - ING AND WE SANG A - LONG

105 G C<sup>b</sup> D<sup>b</sup> C<sup>b</sup>

AND THE BAND JUST KEPT PLAY - ING THAT SAME OLD SONG SHA LA LA LA LA

109 G C<sup>b</sup> D<sup>b</sup> C<sup>b</sup> G C<sup>b</sup> D<sup>b</sup> G C<sup>b</sup> D<sup>b</sup> G C<sup>b</sup> D<sup>b</sup> C G

LA THAT SAME OLD SONG SHA LA LA LA SHA LA LA LA LA LA LA DEE DA WHAT WILL WE

**G** VERSE 3

113 Am D<sup>b</sup> Am D<sup>b</sup>

DO AT THE END OF THE SHOW WHAT WILL WE

117 Am D G C<sup>b</sup> D<sup>b</sup> C<sup>b</sup> G C<sup>b</sup> D<sup>b</sup> C<sup>b</sup>

DO WHEN THE LIGHTS FADE DOWN LOW (I'LL TELL YA WHAT WE'RE GONNA DO)

121 G C<sup>b</sup> D<sup>b</sup> G C<sup>b</sup> D<sup>b</sup> G C<sup>b</sup> D<sup>b</sup> C<sup>b</sup> G Am

WE'LL JUST KEEP SING-ING

125 D<sup>b</sup> Am

SING-ING A - LONG WE'LL JUST KEEP ON SING-ING

REFRAIN

129 D G

THAT SAME OLD SONG WE'LL JUST KEEP ON SING - ING SING-ING A -

133 D

LONG WE'LL JUST KEEP ON SING - ING THAT SAME OLD

137 G C<sup>b</sup> D<sup>b</sup> C<sup>b</sup> G C<sup>b</sup> D<sup>b</sup> C<sup>b</sup> G C<sup>b</sup> D<sup>b</sup> G C<sup>b</sup> D<sup>b</sup> G C<sup>b</sup> D<sup>b</sup> C<sup>b</sup>

SONG SHA LA LA LA LA LA SHA LA LA LA LA SHA LA LA LA LA LA LA SHA LA LA LA DEE

141 G G C<sup>b</sup> D<sup>b</sup> C<sup>b</sup> G

DA THAT SAME OLD SONG SHA LA LA LA DEE DA


RIT. . . . .

# BLUE MOONSHINE

(UNSHOT FOOTAGE VERSION)

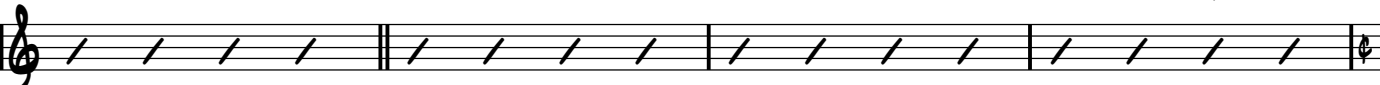
MT NELSON

INTRO  C  
(GUITAR INTRO)

5  (FIDDLE)

9 **A** VERSE  F B<sup>b</sup>  
IT DON'T COME\_ IN A BOTTLE AND IT DON'T TASTE LIKE CHAMPAGNE OR WINE\_ YOU CAN'T  
GONNA NEED A STILL TO MAKE WHISKEY AND YOU'RE GONNA NEED GRAPES TO MAKE WINE BUT

11 F C D G  1. C  
BUY IT AT THE CORNER DRUG - STORE BUT YOU CAN FEEL THAT BLUE MOON SHINE\_ AW, YOU'RE  
ALL YOU NEED\_ IS THE EVENING TO MAKE THAT BLUE MOON

**B** CHORUS  1. C D G  
SHINE\_ TO MAKE\_ TO MAKE\_ TO MAKE\_ THAT BLUE MOON

19 C   
SHINE\_ SHINE\_ BLUE MOON - SHINE\_ IT AIN'T WHIS - KEY IT AIN'T WINE\_

23   
SHINE\_ SHINE\_ BLUE MOON - SHINE\_ SHINE DOWN ON THAT LOVE OF MINE

**C** INTERLUDE

27 C



THE

**D** VERSE

31

C

F

B<sup>b</sup>



NIGHTS THAT GO ON FOR - E - VER WHEN IT SEEMS LIKE THERE'S NOTHIN' BUT TIME AND IT  
HEARTACHES AND MEM'RIES CAN HAUNT YOU WHEN YOU SEE THAT LONELY STREET SIGN AND

35

F

C

D

G

1. C



SURE DON'T HELP WHEN YOU'RE LONELY AND YOU SEE THAT BLUE MOON SHINE  
JUST WHEN YOU THINK YOU'VE FOR - GOT - TEN\_\_\_\_\_ HERE COMES THAT BLUE MOON

**E** CHORUS

39

2. C

D

G



SHINE\_\_\_\_\_ HERE COMES HERE COMES\_\_\_\_\_ HERE COMES THAT BLUE MOON

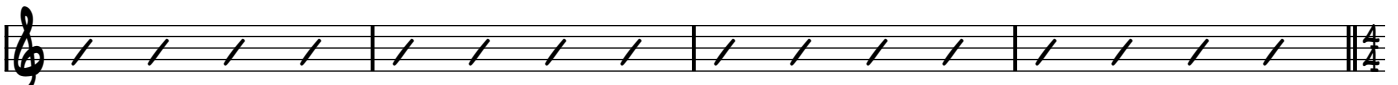
43

C



SHINE\_\_\_\_\_ SHINE\_\_\_\_\_ BLUE MOON - SHINE\_\_\_\_\_ IT AIN'T WHIS - KEY IT AIN'T WINE\_\_\_\_\_

47



SHINE\_\_\_\_\_ SHINE\_\_\_\_\_ BLUE MOON - SHINE\_\_\_\_\_ SHINE DOWN ON THAT LOVE OF MINE

**F** (INST. SOLO)

51 C

55

SHINE SHINE BLUE MOONSHINE LET YOUR LIGHT SHINE ON THAT LOVE OF MINE

59 C

YOU

63 **G** VERSE C F G<sup>b</sup>

KNOW THIS AIN'T JUST A STORY AND IT SURE AIN'T NO NUSERY RHYME BUT  
MIGHT NOT SEE IT A - COMIN' 'CAUSE THEY SAY THAT TRUE LOVE IS BLIND BUT IF YOU'RE

67 F C D G C<sup>1.</sup>

A - NY - THING CAN HAPPEN WHEN YOU'RE UNDER THAT BLUE MOON SHINE  
MIX - IN MOONLIGHT AND ROMANCE\_ AND THEN THROW IN SOME BLUE MOON

**H** CHORUS

71 <sup>2.</sup> C D G

SHINE THAT BLUE THAT BLUE THAT BLUE THAT BLUE MOON

75 C

SHINE SHINE BLUE MOON - SHINE IT AIN'T WHIS - KEY IT AIN'T WINE

79



SHINE SHINE BLUE MOON - SHINE SHINE DOWN ON THAT LOVE OF MINE

**I** (GTR. SOLO1)

83 C



(GTR. SOLO2)

87 D



(FIDDLE SOLO)

91 C



**J**

95



SHINE SHINE BLUE MOONSHINE LET YOUR LIGHT SHINE ON THAT LOVE OF MINE REPEAT TWICE

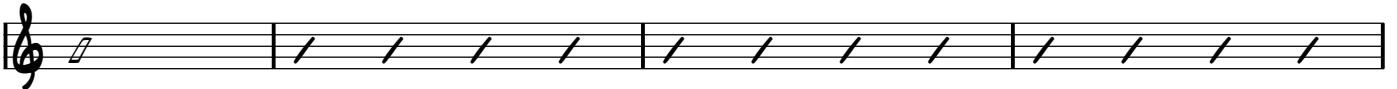
**K** (DRUM SOLO)

99 D

Dsus D Dsus D Dsus D Dsus D



103 **v**



107 **v**



111  $\text{ov}$



115  $\text{ov}$

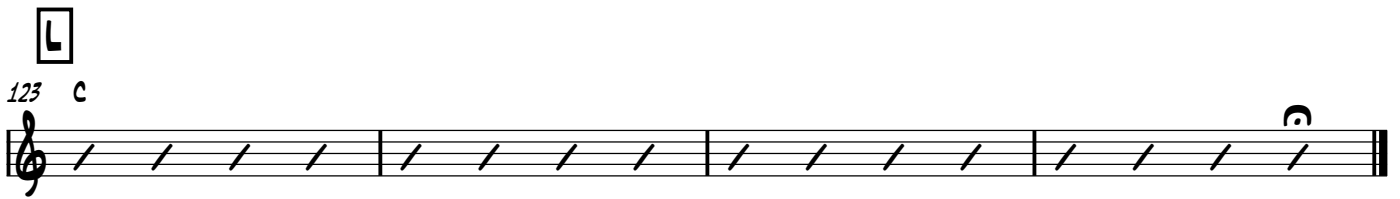


119  $\text{ov}$  (BASS SOLO) (GTR. SOLO)



$\square$  L

123 c



RIT.

# HEAVEN BOUND

MT NELSON

CELTIC REGGAE

C

(FIFE AND DRUMS)

I WAS

## A VERSE 1

4 C F C F C G

WALKIN' IN THE DARKNESS RUNNIN' FROM THE LIGHT A - BANDONED LOST AND LONELY WANDERIN' IN THE NIGHT I

8 C F C F C G

LEFT THE STRAIGHT AND NARROW AND TOOK THE BROAD AND WIDE LED BY FAME AND FORTUNE TO A PLACE I COULD NOT HIDE BUT WHEN WE

## B CHORUS

12 C G

ALL \_\_\_\_\_ GET TO HEA - VEN \_\_\_\_\_ WE WILL LEAVE OUR WAYWARD WAYS \_\_\_\_\_ WHEN WE

16 C G

ALL \_\_\_\_\_ GET TO HEA - VEN WE WILL NEVER GO A - STRAY \_\_\_\_\_ OH, WHEN WE

20 C G C G C

ALL GET TO HEAVEN THERE WILL BE NO CLOUDY DAYS WHEN WE ALL GET TO HEAVEN HE WILL MEND OUR WAYWARD WAYS

## C HARMONICA SOLO

24 C G C G C

I SPENT

## D VERSE 2

28 C F C F C G

CHRISTMAS PLAYIN' POKER AND NEW YEAR'S WITH THE DICE LORD KNOWS THERE'S GOT TO BE SOME CHANGES IN MY LIFE I SPENT

32 C F C F C G

EASTER WITH JACK DANIELS AND MY BIRTHDAY WITH BUD LIGHT OH, LORD YOU KNOW THE WAY I'M LIVIN' IT AIN'T RIGHT BUT WHEN WE

**E** CHORUS

36 C G

ALL GET TO HEAVEN WE WILL LEAVE OUR WAYWARD WAYS WHEN WE

40 C G

ALL GET TO HEAVEN WE WILL NEVER GO ASTRAY OH, WHEN WE

44 C G C G C

ALL GET TO HEAVEN THERE WILL BE NO CLOUDY DAYS WHEN WE ALL GET TO HEAVEN HE WILL MEND OUR WAYWARD WAYS

**F** HARMONICA SOLO

48 C G C G C

**G** GUITAR SOLO

52 C F C F C G

56 C F C F C G

60 C G

64 C G

68 C G C G C

**H** TIN WHISTLE SOLO

72 C G C G C

I

**I** VERSE 3

76 C F C F C G

CHANGED MY WAY OF LIVIN' TRY TO DO WHAT'S RIGHT OH, LORD YOU KNOW IT'S STILL A STRUGGLE AND A FIGHT AND

80 C F C F C G

ON THOSE DAYS I'M WEARY AND LIFE JUST FALLS APART THE THING THAT KEEPS ME GOIN' WAY DOWN IN MY HEART'S THAT WHEN WE

**J** CHORUS

84 C G

ALL \_\_\_\_\_ GET TO HEA - VEN \_\_\_\_\_ WE WILL LEAVE OUR WAYWARD WAYS \_\_\_\_\_ WHEN WE

88 C G

ALL \_\_\_\_\_ GET TO HEA - VEN WE WILL NEVER GO A - STRAY \_\_\_\_\_ OH, WHEN WE

92 C G C G C

ALL GET TO HEAVEN THERE WILL BE NO CLOUDY DAYS WHEN WE ALL GET TO HEAVEN WE WILL SING AND SHOUT HIS PRAISE

**K** TIN WHISTLE SOLO

96 C G C G C

(FIFE AND DRUMS)

# STILL WATERS

MT NELSON

D G D G D

## A VERSE 1

5 D G D A7

DRI - FTING IN A SEA OF DREAMS MAKING ENDLESS PLANS AND SCHEMES A

9 D G D A7 D

WORLD OF PLASTIC USELESS THINGS\_ LIES THAT ONLY FALSE HOPE BRINGS\_

13 D G D A7

WISH - ING YOU WERE NEVER BORN\_\_\_\_\_ AND NEEDING SHELTER FROM THE STORM\_\_\_\_\_ WHEN

17 D G D A D

EVERYTHING SEEMS TO GO WRONG\_\_\_\_\_ AND WE ARE WEAK BUT HE IS STRONG AND

## B CHORUS

21 D G D A7

STILL\_\_\_\_\_ WATERS THERE WILL BE\_\_\_\_\_ FLOW - ING FROM ETERNI - TY\_\_\_\_\_

25 D G D A D

STILL\_\_\_\_\_ WATERS THERE WILL BE\_\_\_\_\_ STILL\_\_\_\_\_ WATERS YOU WILL SEE\_\_\_\_\_

## C VERSE 2

29 D G D A7

LI - VING LIFE ON BORROWED TIME\_\_\_\_\_ THE PRICE OF SOMEONE ELSE'S CRIME\_\_\_\_\_

33 D G D A D

KNOW - ING THAT TO BE SET FREE\_\_\_\_\_ ONLY TRUTH CAN MAKE US SEE\_\_\_\_\_

37 D G D A7

LIFE AND DEATH PLEASURE AND PAIN ALL THAT GLITTERS IS NOT GAIN

41 D G D A D

NE - VER MORE THAN YOU CAN TAKE STOP - PING JUST BEFORE YOU BREAK AND

**D** CHORUS

45 D G D A7

STILL WATERS THERE WILL BE FLOW - ING FROM ETERNI - TY

49 D G D A7 D

STILL WATERS THERE WILL BE STILL WATERS YOU WILL SEE

**E** VERSE 3

53 D G D A7

PLA - CING BETS AGAINST THE ODDS YOU HAD BETTER COUNT THE COST

57 D G D A7 D

ROLL THE DICE AND TRY A - GAIN KNOW - ING YOU CAN NEVER WIN

61 D G D A7

SO YOU STARTED SOMETHING NEW AND YOU BIT OFF MORE THAN YOU COULD CHEW

65 D G D A D

THOUGHTS ARE RACING THROUGH YOUR MIND ARE THE BLIND LEADING THE BLIND BUT

**F** CHORUS

69 D G D A<sup>7</sup>

STILL\_\_\_ WATERS THERE WILL BE\_\_\_ FLOW - ING FROM ETERNI - TY\_\_\_

73 D G D A D

STILL\_\_\_ WATERS THERE WILL BE\_\_\_ STILL\_\_\_ WATERS YOU WILL SEE\_\_\_ A

**G** VERSE 4

77 D G D A<sup>7</sup>

LIFE OF CRIME THAT SEEMS TO PAY\_\_\_ THE END\_\_\_ GETS CLOSER EVERY - DAY\_\_\_

81 D G D A<sup>7</sup> D

E - VERYONE SOMEDAY GETS CAUGHT\_\_\_ BUT THEN THE SAME OLD LESSON WILL BE TAUGHT\_\_\_

**H** HARMONICA SOLO

85 D G D A<sup>7</sup>

89 D G D A D

**I** VERSE 5

93 D G D A<sup>7</sup>

LIVING FOR THE SPOTLIGHT'S THRILL\_\_\_ SOMEONE HAS TO PAY THE BILL\_\_\_

97 D G D A<sup>7</sup> D

ONE DAY YOU WILL NOT SUR - VIVE\_\_\_ AP - PLAUSE WILL CEASE TO GET YOU BY\_\_\_

101 D G D A7

MUD - DY WATERS, ROLLING STONES\_ RO - BERT JOHNSON, DAVID JONES\_

105 D G D A D

DY - LAN, HANK THE LIST GOES ON\_ YOU'RE HERE\_ TODAY THEN YOU'RE GONE\_ AND

**J** CHORUS

109 D G D A7

STILL\_ WATERS I CAN SEE\_ FLOW - ING, FROM ETERNI - TY\_

113 D G D A D

STILL\_ WATERS I CAN SEE STILL\_ WATERS THERE WILL BE\_

**K** INTERLUDE

117 D G D A D

**L** TAG

121 D G D A7

LA\_ LALALA LA DA DEE LA\_ LALALA LA DA DEE\_

125 D G D A D

LA\_ LALALA LA DA DEE\_ (PENNY WHISTLE)

129

(HARMONICA)

# TAKE IT TO THE BANK

MT NELSON

GONG

BAGPIPES

GUITAR INTRO

Musical notation for the first line, including a gong, bagpipes, and guitar intro. The notation shows a treble clef, a key signature of two flats, and a 4/4 time signature. It features a gong, bagpipes, and a guitar intro with a 2-measure and a 4-measure section.

**A**

Musical notation for the second line, starting at measure 9. It features a treble clef, a key signature of two flats, and a 4/4 time signature. The notation includes a 9-measure section with a 8b7#9 chord.

FOXY LADY, PURPLE HAZE THAT WAS THE WORD WAY BACK IN THE DAY SLY'S, "DANCE TO THE MUSIC" RAY'S "WHAT'D I SAY?" HANK'S

Musical notation for the third line, starting at measure 12. It features a treble clef, a key signature of two flats, and a 4/4 time signature. The notation includes a 12-measure section with a 10-measure break.

"MOVE IT ON OVER", BUT I'M HERE TO STAY AW, SHUT UP!

**B**

Musical notation for the fourth line, starting at measure 14. It features a treble clef, a key signature of two flats, and a 4/4 time signature. The notation includes a 14-measure section.

FAST TIMES AT RIDGEMONT HIGH BATMAN, SUPERMAN, SUPERFLY ENTER THE DRAGON, ON GOLDEN POND, NOW

Musical notation for the fifth line, starting at measure 17. It features a treble clef, a key signature of two flats, and a 4/4 time signature. The notation includes a 17-measure section.

AUSTIN POWERS IS THE NEW JAMES BOND SAY OVER, UNDER, SIDEWAYS, DOWN

Musical notation for the sixth line, starting at measure 19. It features a treble clef, a key signature of two flats, and a 4/4 time signature. The notation includes a 19-measure section.

SOMETHING NEW'S COMIN' TO YOUR TOWN MORE MOVING THAN ANY MOTION, DEEPER THAN ANY OCEAN

Musical notation for the seventh line, starting at measure 21. It features a treble clef, a key signature of two flats, and a 4/4 time signature. The notation includes a 21-measure section with a 10-measure break.

BRIGHTER THAN ANY LIGHT, LONGER THAN ANY NIGHT

**C**

Musical notation for the eighth line, starting at measure 23. It features a treble clef, a key signature of two flats, and a 4/4 time signature. The notation includes a 23-measure section with a 8b7#9 chord.

HIGH SPEED HOOKUPS WIRELESS PHONES DOT COM, EMAIL, ONLINE LOANS

Musical notation for the ninth line, starting at measure 25. It features a treble clef, a key signature of two flats, and a 4/4 time signature. The notation includes a 25-measure section.

APPLE, GOOGLE, MICROSOFT YAHOO, EBAY, WHAT'S IT COST?

27 D

JAZZ\_ COUNTRY, DISCO RAP THE NAME DON'T MATTER IF IT'S CRAP, IT'S CRAP

30

AFRO\_ GUMBY. DUCKTAIL. SHAG CHANGE IT AROUND IT'S THE SAME OLD BAG LOOK OUT KIDS, WHAT'S GOIN' DOWN?

33

SOMETHING NEW'S COMIN' TO YOUR TOWN MORE MOVING THAN ANY MOTION, DEEPER THAN ANY\_ OCEAN

35 BREAK

BRIGHTER\_ THAN ANY LIGHT, \_ AFTER HER COMES THE NIGHT

37 E  $g^b7\sharp9$

FLOAT LIKE A BUTTERFLY\_ STING LIKE\_ A\_ BEE IT DON'T MEAN\_ NOTHIN' IF\_ YOU'RE NOT\_ SET FREE YOU CAN

39 E<sup>b9</sup>

READ ALL THE BOOKS IN THE LI- BRA - RY BUT IF YOU DON'T UNDERSTAND THEN YOU STILL CAN'T SEE\_

41 BREAK F  $g^b7\sharp9$

YOU CAN TAKE IT TO THE BANK\_ YOU CAN TAKE IT FROM ME

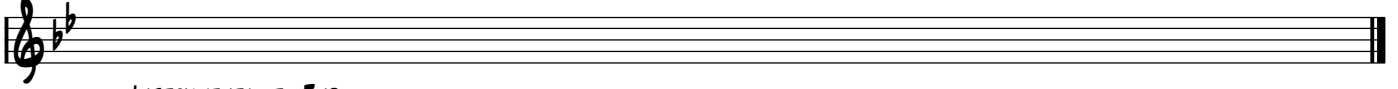
43 G GUITAR BREAK E<sup>b9</sup>

ONE. TIMES ONE TIMES ONE AIN'T THREE\_ WELL

48 H

NOW THAT WE HAVE FOUND THE GROOVE I THINK IT'S TIME TO BUST A MOVE

50



INSTRUMENTAL TO END

# UNSHOT FOOTAGE

MT NELSON

8<sup>b</sup>MAT<sup>7</sup> (STRINGS) 8<sup>b</sup> E<sup>b</sup>

5 8<sup>b</sup> Cm 8<sup>b</sup> F7

9 8<sup>b</sup> INTRO E<sup>b</sup>

13 8<sup>b</sup> Cm 8<sup>b</sup> F7

17 8<sup>b</sup> **A** VERSE 1 E<sup>b</sup>

AS WE JOURNEY THROUGH THIS LIFE \_\_\_\_\_ SOME DAYS FILLED WITH GRIEF AND

21 8<sup>b</sup> Cm 8<sup>b</sup> F7

STRIFE A LONELY ROAD LIES STRAIGHT A - HEAD MAYBE UN - KIND WORDS WERE

25 8<sup>b</sup> E<sup>b</sup>

SAID AS WE GO \_\_\_\_\_ FROM DAY TO DAY \_\_\_\_\_ SOMETIMES CLOUDS \_\_\_\_\_ CAN HIDE THE

29 8<sup>b</sup> Cm 8<sup>b</sup> F7

WAY WHEN THINGS GO WRONG ALL HOPE IS GONE \_\_\_\_\_ SOME DAYS ALL \_\_\_\_\_ YOU HAVE'S A

33 8<sup>b</sup> **B** CHORUS 8<sup>b</sup> E<sup>b</sup>

SONG THROUGH A GLASS \_\_\_\_\_ DARKLY WE SEE \_\_\_\_\_ SOMEDAY SOON \_\_\_\_\_ NO CLOUDS THERE'LL

37 8<sup>b</sup> Cm 8<sup>b</sup> F7

BE \_\_\_\_\_ BEYOND THE VEIL \_\_\_\_\_ BEYOND THE PALE \_\_\_\_\_ EVERY - ONE \_\_\_\_\_ WILL SOMEDAY

INSTRUMENTAL BREAK

41  $B^b$   $E^b$   $B^b$   $F7$

SAIL \_\_\_\_\_

**C** VERSE 2

45  $B^b$   $E^b$

LIKE A SHIP \_\_\_\_\_ TOSSED BY THE SEA \_\_\_\_\_ SOME DAYS THAT'S \_\_\_\_\_ HOW LIFE CAN

49  $B^b$   $Cm$   $B^b$   $F7$

BE \_\_\_\_\_ CAN'T FIND THE WAY LOST IN THE NIGHT \_\_\_\_\_ SEEMS LIKE NO - THING TURNS OUT

53  $B^b$   $E^b$

RIGHT \_\_\_\_\_ SOMETIMES ALL \_\_\_\_\_ OUR DREAMS FALL SHORT \_\_\_\_\_ HAPPY - NESS CANNOT BE

57  $B^b$   $Cm$   $B^b$   $F7$

BOUGHT WHEN THINGS GO WRONG \_\_\_\_\_ ALL HOPE IS GONE \_\_\_\_\_ SOME DAYS ALL YOU HAVE'S A

**D** CHORUS

61  $B^b$   $E^b$

SONG THROUGH A GLASS \_\_\_\_\_ DARKLY WE SEE \_\_\_\_\_ SOMEDAY SOON \_\_\_\_\_ NO CLOUDS THERE'LL

65  $B^b$   $Cm$   $B^b$   $F7$

BE \_\_\_\_\_ BEYOND THE VEIL \_\_\_\_\_ BEYOND THE PALE \_\_\_\_\_ EVERY - ONE \_\_\_\_\_ WILL SOMEDAY

INSTRUMENTAL BREAK

69  $B^b$   $E^b$   $B^b$   $F7$

SAIL \_\_\_\_\_

**E** HARMONICA SOLO

73  $B^b$   $B^b$   $E^b$

77  $B^b$   $E^b$   $B^b$   $F7$

81  $B^b$   $E^b$   $B^b$   $F7$

INSTRUMENTAL BREAK

85  $B^b$  **F** VERSE 3

WHEN YOUR FRIENDS \_\_\_\_\_ CANNOT BE FOUND \_\_\_\_\_ AND THIS WORLD \_\_\_\_\_ HAS LET YOU

89

DOWN YOUR PLANS HAVE FAILED NOTHIN' WORKED OUT \_\_\_\_\_ SEEMS LIKE ALL \_\_\_\_\_ THERE'S LEFT IS

93

DOUBT IN THE END THE THINGS WE SAY \_\_\_\_\_ THAT GET US THROUGH \_\_\_\_\_ ANOTHER

97

DAY TO CARRY ON \_\_\_\_\_ WHEN THINGS GO WRONG \_\_\_\_\_ SOME DAYS ALL \_\_\_\_\_ YOU HAVE'S A

101 **G** CHORUS  $B^b$   $E^b$

SONG THROUGH A GLASS \_\_\_\_\_ DARKLY WE SEE \_\_\_\_\_ SOMEDAY SOON \_\_\_\_\_ NO CLOUDS THERE'LL

105  $B^b$   $Cm$   $B^b$   $F7$

BE \_\_\_\_\_ BEYOND THE VEIL \_\_\_\_\_ BEYOND THE PALE \_\_\_\_\_ EVERY - ONE \_\_\_\_\_ WILL SOMEDAY

109  $B^b$   $E^b$   $B^b$   $F$

INSTRUMENTAL BREAK

SAIL \_\_\_\_\_

4

**H** STRING SOLO

113  $B^b$   $E^b$   $B^b$

117  $C_M$   $B^b$   $F^7$

**I** BAGPIPE SOLO

121  $B^b$   $E^b$

125  $B^b$   $C_M$   $B^b$   $F^7$

129  $B^b$

FADE OUT

# HEAVEN BOUND

MT NELSON

CELTIC REGGAE

4/4 (FIFE AND DRUMS) I WAS

## A VERSE 1

4 C F C F C G

WALKIN' IN THE DARKNESS RUNNIN' FROM THE LIGHT A - BANDONED LOST AND LONELY WANDERIN' IN THE NIGHT I

8 C F C F C G

LEFT THE STRAIGHT AND NARROW AND TOOK THE BROAD AND WIDE LED BY FAME AND FORTUNE TO A PLACE I COULD NOT HIDE BUT WHEN WE

## B CHORUS

12 C G

ALL \_\_\_\_\_ GET TO HEA - VEN \_\_\_\_\_ WE WILL LEAVE OUR WAYWARD WAYS \_\_\_\_\_ WHEN WE

16 C G

ALL \_\_\_\_\_ GET TO HEA - VEN WE WILL NEVER GO A - STRAY \_\_\_\_\_ OH, WHEN WE

20 C G C G C

ALL GET TO HEAVEN THERE WILL BE NO CLOUDY DAYS WHEN WE ALL GET TO HEAVEN HE WILL MEND OUR WAYWARD WAYS

## C HARMONICA SOLO

24 C G C G C

I SPENT

## D VERSE 2

28 C F C F C G

CHRISTMAS PLAYIN' POKER AND NEW YEAR'S WITH THE DICE LORD KNOWS THERE'S GOT TO BE SOME CHANGES IN MY LIFE I SPENT

32 C F C F C G

EASTER WITH JACK DANIELS AND MY BIRTHDAY WITH BUD LIGHT OH, LORD YOU KNOW THE WAY I'M LIVIN' IT AIN'T RIGHT BUT WHEN WE

**E** CHORUS

36 C G

ALL GET TO HEAVEN WE WILL LEAVE OUR WAYWARD WAYS WHEN WE

40 C G

ALL GET TO HEAVEN WE WILL NEVER GO A STRAY OH, WHEN WE

44 C G C G C

ALL GET TO HEAVEN THERE WILL BE NO CLOUDY DAYS WHEN WE ALL GET TO HEAVEN HE WILL MEND OUR WAYWARD WAYS

**F** HARMONICA SOLO

48 C G C G C

**G** GUITAR SOLO

52 C F C F C G

56 C F C F C G

60 C G

64 C G

68 C G C G C

**H** TIN WHISTLE SOLO

72 C G C G C

I

**I** VERSE 3

76 C F C F C G

CHANGED MY WAY OF LIVIN' TRY TO DO WHAT'S RIGHT OH, LORD YOU KNOW IT'S STILL A STRUGGLE AND A FIGHT AND

80 C F C F C G

ON THOSE DAYS I'M WEARY AND LIFE JUST FALLS APART THE THING THAT KEEPS ME GOIN' WAY DOWN IN MY HEART'S THAT WHEN WE

**J** CHORUS

84 C G

ALL \_\_\_\_\_ GET TO HEA - VEN \_\_\_\_\_ WE WILL LEAVE OUR WAYWARD WAYS \_\_\_\_\_ WHEN WE

88 C G

ALL \_\_\_\_\_ GET TO HEA - VEN WE WILL NEVER GO A - STRAY \_\_\_\_\_ OH, WHEN WE

92 C G C G C

ALL GET TO HEAVEN THERE WILL BE NO CLOUDY DAYS WHEN WE ALL GET TO HEAVEN WE WILL SING AND SHOUT HIS PRAISE

**K** TIN WHISTLE SOLO

96 C G C G C

(FIFE AND DRUMS)

# THE WATCHMAN'S REFRAIN

MT NELSON

G C/G G C/G **A** VERSE 1 G C G

IN THE VALLEY OF THE PASSENGERS THE BLIND WATCHMAN SITS AND WAITS HE

5 D G C G

DOES NOT NEED TO SEE HE KNOWS THE HOUR IS LATE FOR THE SIGNAL HE IS SEEKING HE DOES NOT NEED HIS EYES FOR AS THE

9 D G **B** HARMONICA SOLO C G

LIGHT REVEALS THE NIGHT SO THE TRUTH REVEALS THE LIES

13 D G **C** VERSE 2 G C G

HE'S CALLING IN HIS MARKERS AND HE'S TAKING NO MORE BETS THE

17 D G C G

GAME IS NEARLY OVER WITH NO PAYOFF FOR REGRETS WHEN THE LAST ONE HEARS THE CALLER AND WHEN THEY TAKE THE STAND THEY

21 D G **D** HARMONICA SOLO C G

WILL NOT NEED A JURY A PA - RADE OR MARCHING BAND

25 D G **E** VERSE 3 G C G

SEE. THE GAME WAS FIXED AND THE DECK WAS STACKED AN NO MATTER HOW YOU PLAYED THE

29 D G C G

LOSER HELD THE WINNING HAND THE DEBT IT HAD BEEN PAID A MISS IS JUST AS GOOD AS A MILE 'AN A GRIN WON'T GET YOU IN THERE'S A

33 D G **F** HARMONICA SOLO C G

TIME WHEN NOTHIN' BUT THE TRUTH CAN GUARANTEE YOU'LL WIN

37 D G C G

THE TRUTH I KNOW YOU CANNOT FAKE AND THIS IS JUST A SONG, BUT

41 D G C G

ONE THING I AM CERTAIN OF TWO RIGHTS DON'T MAKE A WRONG

45 D G G C G

49 D G C G

53 D G C G

57 D G C G

61 D G C

65 G D G C

# YODEL ON

MT NELSON

## A DIXIELAND BAND INTRO

5

AUDIENCE APPLAUSE

A A

5

D A

## B VERSE

9

E A

I JUST WANNA GO HOME

13

D A

I JUST WANNA GO HOME I WANNA I WANNA I WANNA GO HOME

## C

17

E A

I JUST WANNA GO HOME I JUST WANNA BE A - LONE \_\_\_\_\_

21

D A

I JUST WANNA BE A - LONE \_\_\_\_\_ I WANNA I WANNA I WANNA BE ALONE

## D GUITAR SOLO

25

A

I JUST WANNA BE A - LONE \_\_\_\_\_

29

D A

## E VERSE

33

E A

I DON'T WANNA GO HOME

37 D A

I DON'T WANNA GO HOME I DON'T WANNA DON'T WANNA DON'T WANNA GO HOME

41 E A F

I DON'T WANNA GO HOME I DON'T WANNA BE A - LONE\_\_\_

45 D A

I DON'T WANNA BE A - LONE\_\_\_ I DON'T WANNA DON'T WANNA DON'T WANNA BE ALONE

49 E A G

I DON'T WANNA BE A - LONE\_\_\_ YODEL ODEL LAYEE\_\_\_

53 D A

YODEL ODEL LAYEE DI YODEL LAYEE YODEL LAYEE YODEL LAYEE\_\_\_

57 E A H DIXIELAND BAND

YODEL ODEL LAYEE DI\_\_\_ (AUDIENCE APPLAUSE)

61 D A

65 E A I GUITAR SOLO

69 D A

73 E A

A musical staff in treble clef with a key signature of two sharps (F# and C#). The staff contains a series of diagonal slashes, indicating a sustained chord. The staff is divided into three measures by vertical bar lines. Above the first measure is the letter 'E', and above the second measure is the letter 'A'. The third measure contains a fermata symbol. The staff ends with a double bar line.

(AUDIENCE APPLAUSE - FADE)